



Cape Cobra
Naja nivea



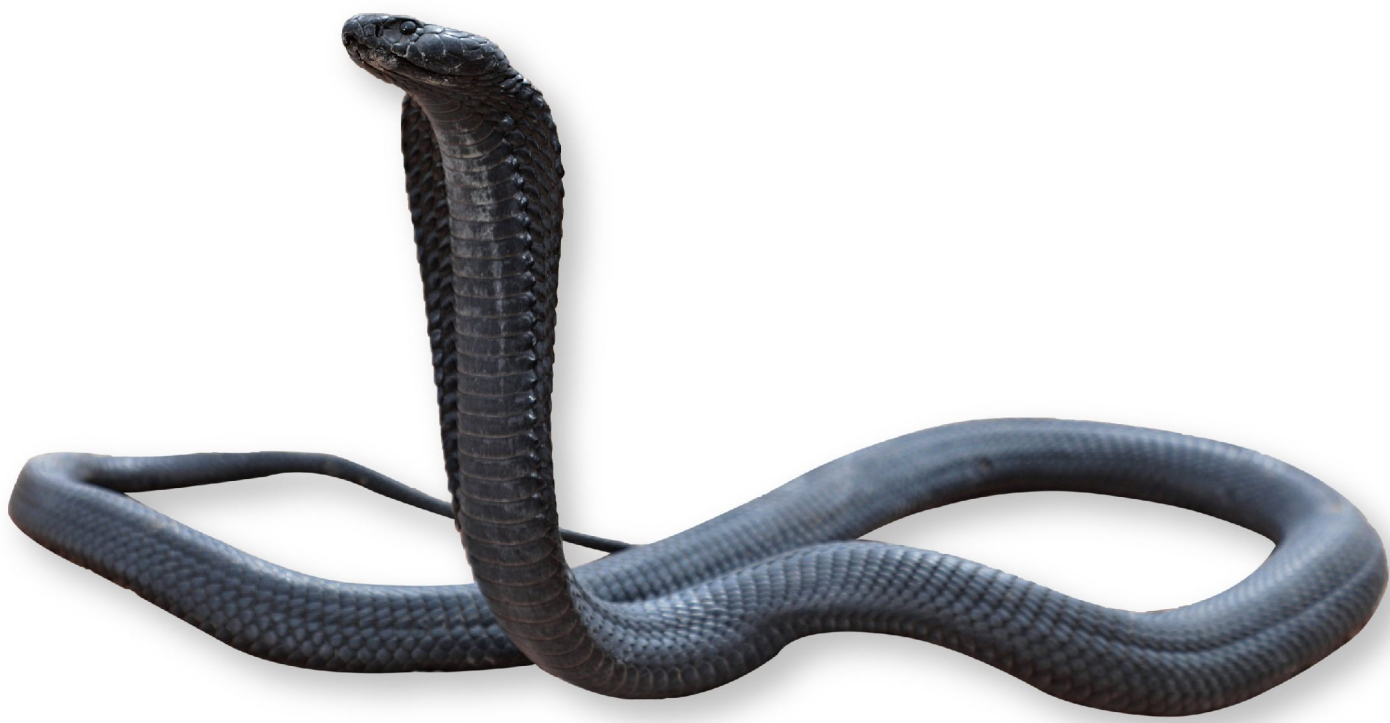
Beetz's Tiger Snake
Telescopus beetzii



Spotted Skaapsteker
Psammophylax rhombeatus



Spotted Rock Snake
Lamprophis guttatus



Black Spitting Cobra
Naja nigricincta woodi



Puff Adder
Bitis arietans



Karoo Sand Snake
Psammophis notostictus



Bug-eyed House Snake
Boaedon mentalis



Cross-marked Grass Snake
Psammophis crucifer



Common Egg-eater
Dasypeltis scabra



Angulate Tortoise
Chersina angulata



Many-horned Adder
Bitis cornuta



Adult

Mole Snake
Pseudaspis cana



Juvenile



Karoo Girdled Lizard
Karusasaurus polyzonus

Reptiles and Amphibians

of

Kokerboom Biological Research Station



Delelande's Beaked Blind Snake
Rhinyophlops ilandei

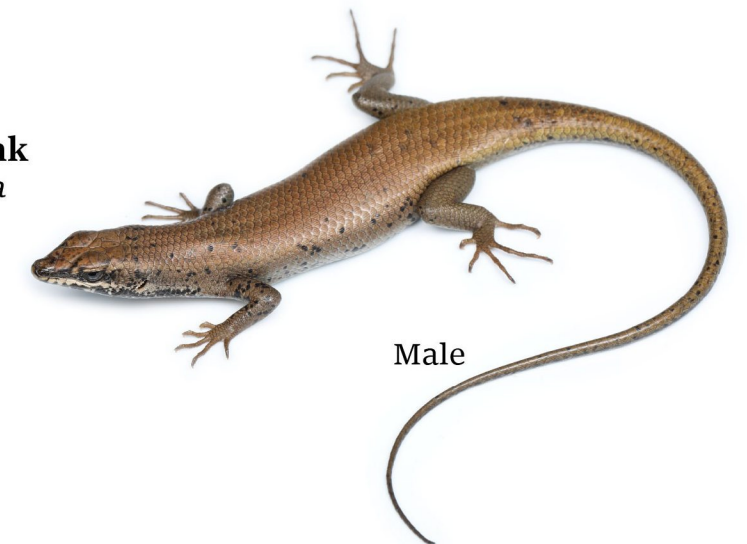


Peer's Girdled Lizard
Namazonurus peeri



Female

Western Rock Skink
Trachylepis sulcata



Male



Dwarf Plated Lizard
Cordylus subdorsalis



Western Sandveld Lizard
Nucras tessellata



Namaqua Sand Lizard
Pedioplanis namaquensis



Southern Rock Agama
Agama atra



Variegated Skink
Trachylepis variegata



Bibron's Gecko
Chondrodactylus bibronii



Spotted Sand Lizard
Pedioplanis tinocellata



Knox's Desert Lizard
Merops knoxii



Namaqua Flat Gecko
Afrodura namaquensis



Striped Dwarf Legless Skink
Acontias lineatus



Namaqua Thin-skinned Gecko
Pachydactylus namaquensis



Western Dwarf Chameleon
Bradypodion occidentale



Northern Striped Pygmy Gecko
Goggia lineata



Namaqua Day Gecko
Rhoptropella ocellata



Weber's Gecko
Pachydactylus weberi



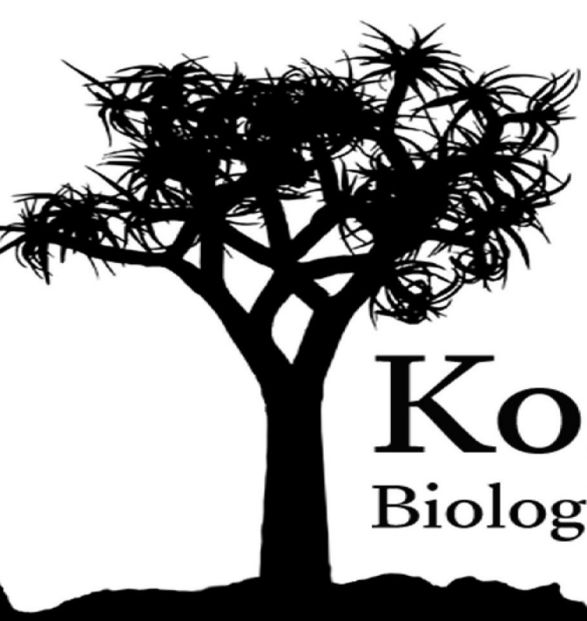
Large-scaled Banded Gecko
Pachydactylus macrolepis



Paradise Toad
Vandijkophrynus robinsoni



Namaqua Caco
Cacosternum namaquense



Kokerboom
Biological Research Station

Kokerboom Biological Research Station

+27 82 494 2039 | info@kokerboom.org

www.kokerboom.org

The Kokerboom Biological Research Station is an 850-hectare facility nestled among the pristine koppies of Namaqualand, just outside Springbok in the Northern Cape. Known for its rich biodiversity and unique, endemic flora, the area also features diverse fauna and notable geology. The station provides secure, affordable accommodation and fieldwork facilities for local and international students, supporting collaborative research across a wide range of disciplines.