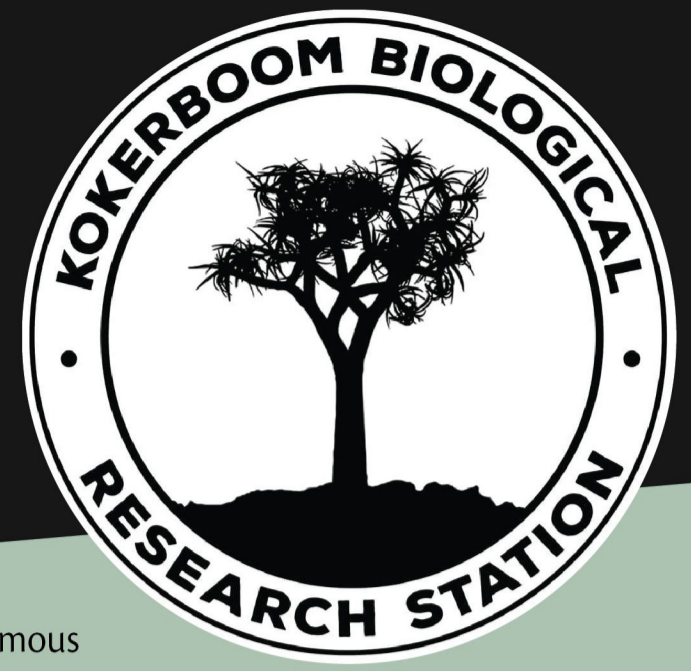


# COMMON REPTILES OF KOKERBOOM BIOLOGICAL RESEARCH STATION



● - Highly venomous ● - Venomous ● - Mildly venomous  
● - Can inflict a painful bite ● - Harmless



**Black Spitting Cobra**  
(*Naja nigricincta woodi*)



**Many-horned Adder**  
(*Bitis cornuta*)



**Mole Snake**  
(*Pseudaspis cana*)



**Karoo Sand Snake**  
(*Psammophis notostictus*)



**Bug-eyed House Snake**  
(*Boaedon mentalis*)



**Namaqualand Dwarf Legless Skink**  
(*Acontias tristis/lineatus*)



**Namaqua Sand Lizard**  
(*Pedioplanis namaquensis*)



**Knox's Desert Lizard**  
(*Meroleos knoxii*)



**Karoo Girdled Lizard**  
(*Karusasaurus polyzonus*)



**Southern Rock Agama**  
(*Agama atra*)



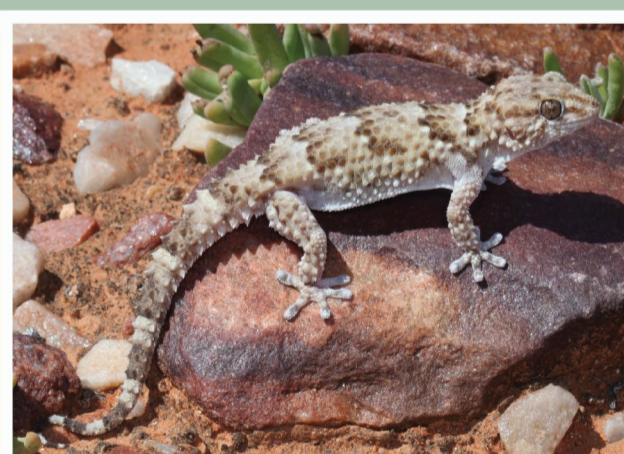
**Variegated Skink**  
(*Trachylepis variegata*)



**Western Rock Skink**  
(*Trachylepis sulcata*)



**Dwarf Plated Lizard**  
(*Cordylus subcaeruleus*) - Photo: Luke Kemp



**Bibron's Giant Gecko**  
(*Chondrodactylus bibronii*)



**Weber's Gecko**  
(*Pachydactylus weberi*)



**Namaqua Gecko**  
(*Pachydactylus namaquensis*)



**Large-scaled Banded Gecko**  
(*Pachydactylus macrolepis*)



**Namaqua Day Gecko**  
(*Rhopropella ocellata*)



**Western Dwarf Chameleon**  
(*Bradypodion occidentale*) - Photo: Ashley Kemp



**Angulate Tortoise**  
(*Chersina angulata*)

The Kokerboom Biological Research Station is an 850-hectare facility nestled among the pristine koppies of Namaqualand, just outside Springbok in the Northern Cape. Known for its rich biodiversity and unique, endemic flora, the area also features diverse fauna and notable geology. The station provides secure, affordable accommodation and fieldwork facilities for local and international students, supporting collaborative research across a wide range of disciplines.

Kokerboom Biological Research Station

+27 82 494 2039 | [info@kokerboom.org](mailto:info@kokerboom.org)

[www.kokerboom.org](http://www.kokerboom.org)

